

WHOLESALE PARTNER PROGRAM

Your Brand. Your Scent. Your Custom Product.
Created at Sense By The Falls



WHOLESALE PARTNER PROGRAM

OUR PRODUCTS. YOUR BRAND

As a non-profit entity, commercial retailer, or business expert, you've undoubtedly dedicated countless hours to cultivating your brand and devising innovative strategies to boost income. You might believe you've exhausted all avenues, from enhancing your online presence and social media engagements to hosting events and optimizing in-store experiences. Yet, have you pondered the idea of encapsulating your brand's essence through a unique fragrance?

Sense By The Falls provides distinctive and lucrative wholesale opportunities that leave a lasting impression. Our expert fragrance designers collaborate with you to craft a signature scent that embodies your brand's identity. Whether it's selecting the perfect candle vessels, choosing fragrances, or customizing packaging, your product can range from simple elegance to intricate luxury.

Sense By The Falls Wholesale Process

- 1. Consultation with Sense:** Schedule a consultation with our wholesale team where we will get to know you, your brand, and your product vision.
- 2. Create your custom scent:** Based on the consultation we will make a set of samples for you to test and give us feedback if you want any changes before creating the order. Each sample cost \$1.50 plus shipping.
- 3. Choose your product:** Choose your product(s) for your order from the options in the wholesale brochure. If your vision is different from our regular offerings we can research other product options based on your budget needs.
- 4. Label creating and printing:** Send Sense your completed high-resolution label. If you prefer to have us create your product's logo, we will charge a \$50 design fee and need you to send us graphics and artwork for your label.
- 5. Confirm and complete your invoice:** Once everything is finalized we will send you your invoice. Once the invoice is paid we will begin your order.

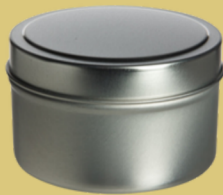
* Wholesale candles are sold per case (case size varies per product). Minimum purchase for wholesale customers is one case. You can supply us with a custom design for your label. Laser-printed labels are included. Upgraded label options are available. Candles will be ready for pickup/shipping 10-14 business days from when your invoice is paid. Product options may vary depending on the supply chain availability. The following are included in your cost: Wholesale Consultation, Your Custom Scented Products, and Label Printing *

Wholesale Tin Options

6 oz Deep Metal Tins



Gold



Silver

Cylinder Metal Tin



8oz Silver



16 oz Silver

4oz Infinity Tins



White



Silver



Gold



Black



Bronze

11oz Infinity Tins



White



Silver



Gold



Black



Bronze

Wholesale Glass Options

9 oz Straight Sided Jars



Clear

Lid Options: Gold, Black, White



Amber

11oz Victorian Glass



Blue



Green



Amber



Frosted White



Clear



Ruby

11oz Signature



Lid Options: Silver and Black



White



Black

Wholesale Home Options

6oz Reed Diffuser



Frosted



Black



Clear

6oz Wax Melts



| Product Description | Quantity Per Case | Price Per Case/Product | Suggested Retail Price |
|---------------------------|-------------------|--|------------------------|
| 6oz Deep Metal Tins | 24 | Case Price: \$180 Per Candle: \$7.50 | \$12 |
| 8oz Cylinder Metal Tins | 24 | Case Price: \$192 Per Candle: \$8.00 | \$16 |
| 4oz Infinity Tins | 12 | Case Price: \$90 Per Candle: \$7.50 | \$10 |
| 11oz Victorian Glass Jars | 12 | Case Price: \$102 Per Candle: \$8.50 | \$16 |
| 11oz Signature Jars | 12 | Case Price: \$138 Per Candle: \$11.50 | \$24 |
| 9oz Straight Sided Jars | 12 | Case Price: \$114 Per Candle: \$9.50 | \$19 |
| 11oz Infinity Tins | 12 | Case Price: \$138 Per Candle: \$11.50 | \$22 |
| 6oz Wax Melts | 24 | Case Price: \$180 Per Candle: \$7.50 | \$14 |
| 16 oz Cylinder Metal Tins | 24 | Case Price: \$300 Per Candle: \$12.50 | \$24 |
| 6oz Reed Diffuser | 12 | Case Price: \$168 Per Diffuser: \$14.00 | \$26 |

*** Wholesale products are sold per case. Shipping is dependent on the product, case size, and location and will be added to your invoice***